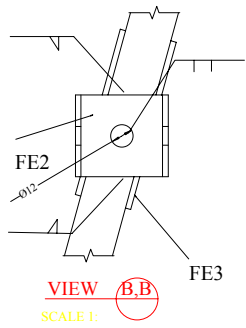
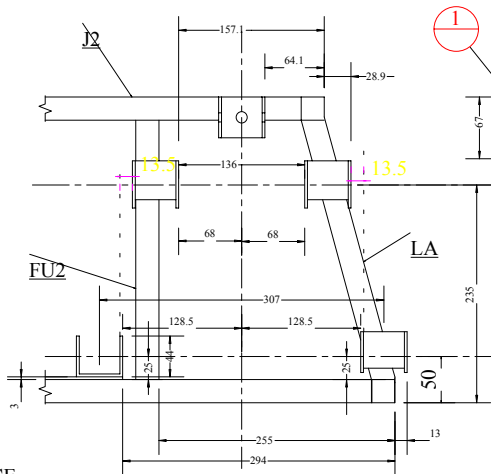


MOUNTING METHOD TYP 6 PLACES

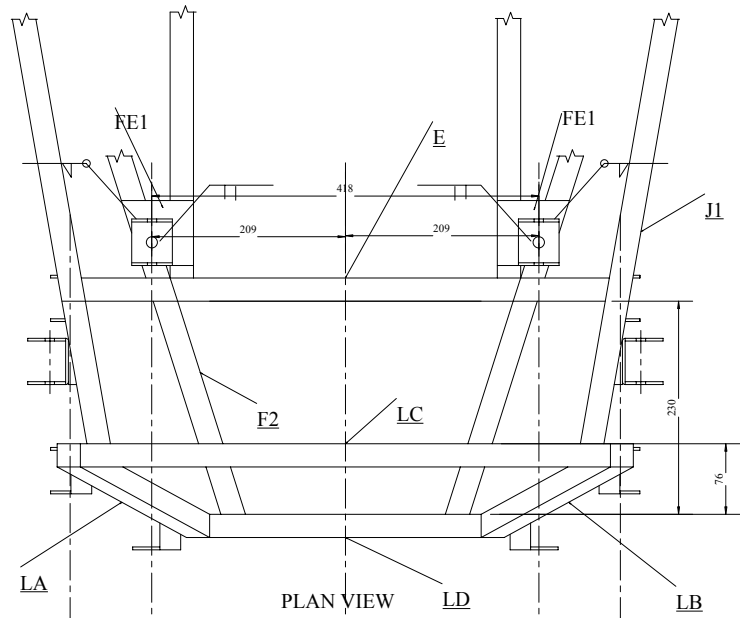


FE3 TYP MOUNTING BRACE

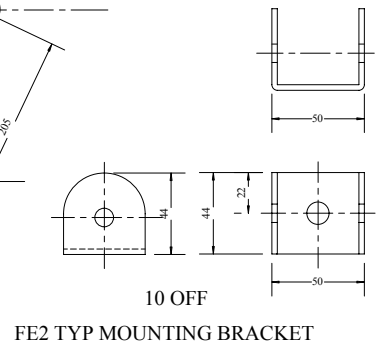
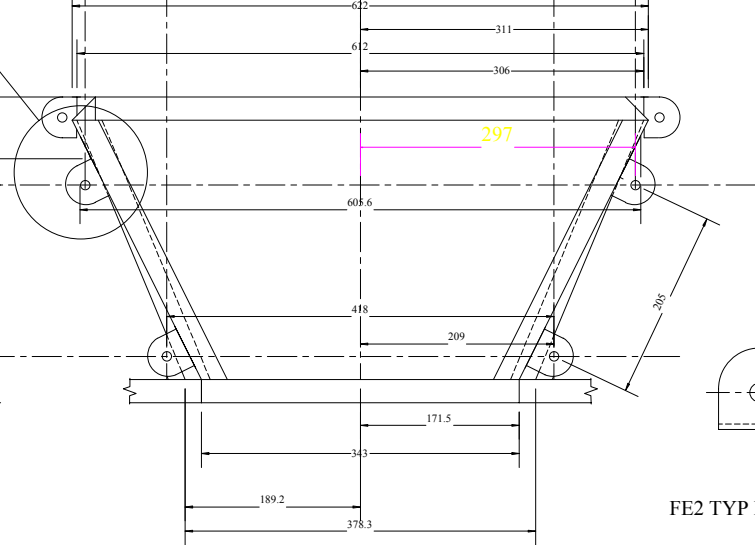
12 OFF



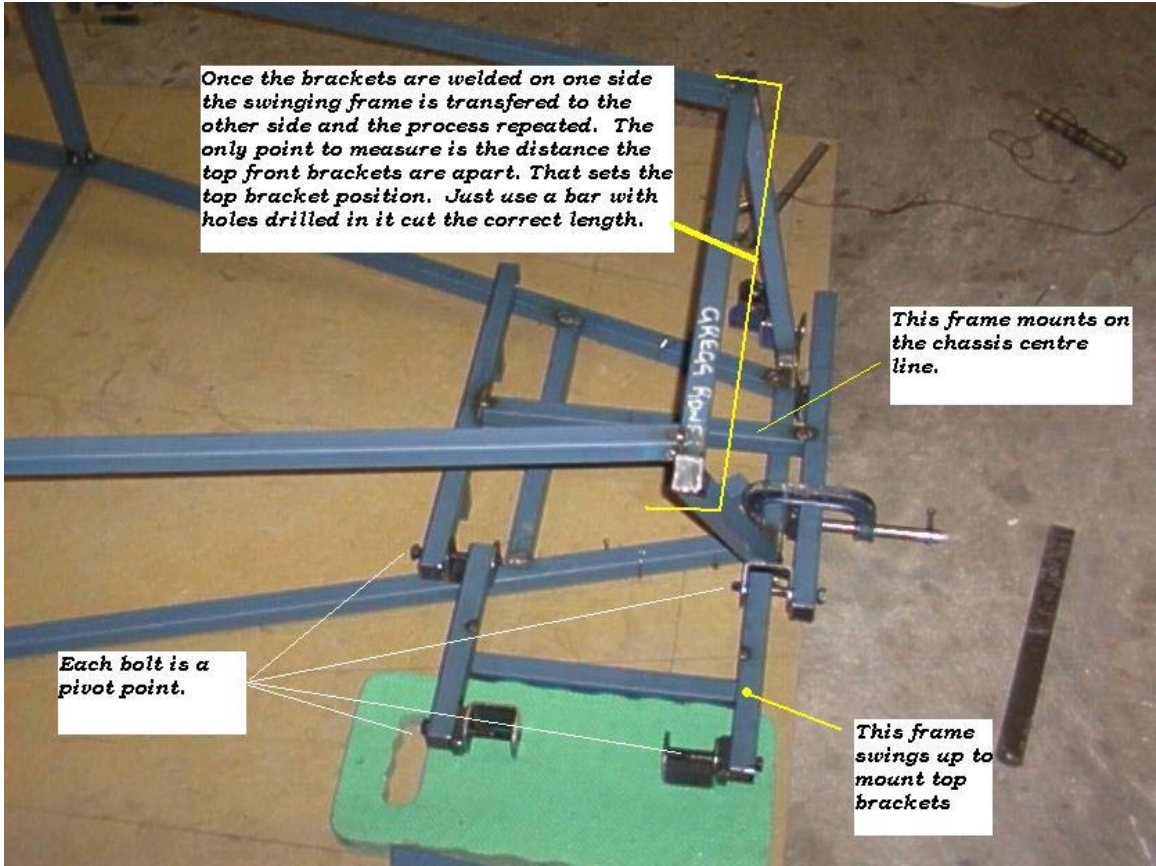
SIDE ELIVATION



FRONT ELIVATION







Once the brackets are welded on one side the swinging frame is transferred to the other side and the process repeated. The only point to measure is the distance the top front brackets are apart. That sets the top bracket position. Just use a bar with holes drilled in it cut the correct length.

This frame mounts on the chassis centre line.

Each bolt is a pivot point.

This frame swings up to mount top brackets